

2015  
September  
Issue 79

## EURAXESS LINKS JAPAN

Dear Colleagues,

Welcome to the September edition of the EURAXESS Links Japan newsletter!

It's not too late to apply and participate in our final upcoming event:

- **Applications through abstract submission until 2 October** for the [European Research\(ers\)' Day](#), 11 December, Delegation of the EU to Japan, Tokyo.

Please note that the call has been extended to citizens of all EURAXESS countries (check the list [here](#)). Detailed event description, full terms and conditions, and additional content is available, so go and check out the ELJ activities section of this newsletter and the related web pages!

The finalists of the **EURAXESS Science Slam Japan 2015** have been announced, and we now **welcome registrations for the event!** We look forward to seeing you on 23 October!

A variety of other events are upcoming this month, in particular focusing on the newly announced Horizon 2020 Work Programme for 2016-2017, so check the Events section of this newsletter!

Once again, you will also find in this document all upcoming deadlines to research cooperation or mobility projects between Europe and Japan.

Finally, this month's EU insight on new happenings concerning the Eu Commission's scientific advice mechanism (SAM).

Enjoy the reading!

Wishing you a smooth transition from summer heat to autumn typhoons,

Matthieu PY | EURAXESS Links Japan Country Representative | [japan@euraxess.net](mailto:japan@euraxess.net)

This Newsletter is also intended as a **communication tool with you all**, so please **do not hesitate to contact us** at [japan@euraxess.net](mailto:japan@euraxess.net) for comments, corrections or if you want to advertise for a particular funding scheme or event.





# Contents

1	EU Insight – Progress in setting up the Commission’s new scientific advice mechanism .....	5
2	In Focus: Marie Skłodowska-Curie Actions. ....	7
2.1	Interview with Snezana Krstic, Chair of the Marie Curie Alumni Association .....	7
2.2	About the Marie Skłodowska-Curie actions (MSCA) .....	10
2.3	MSCA - What’s in it for Japanese researchers? .....	11
3	EURAXESS Links Japan activities .....	13
3.1	EURAXESS Science Slam Japan 2015 .....	13
3.1.1	What’s the Slam like when in the audience? .....	13
3.2	European Research(ers’) Day, 11 December, Tokyo .....	14
	Features of the event: .....	14
	To be eligible you must: .....	14
4	News & Developments .....	15
4.1	EU, Member States and Associated Countries .....	15
4.1.1	Commission invests EUR 70.5 million for innovative SMEs under Horizon 2020 SME Instrument .....	15
4.1.2	Europe celebrates its top young scientists .....	15
4.1.3	Commission presents key research and innovation actions contributing to the Energy Union for all EU Member State.....	15
4.1.4	Over 150 scientists in the frame for new EU science advice panel .....	16
4.1.5	DocPro: a brand new tool to connect doctorate holders and companies.....	16
4.2	Japan .....	17
4.2.1	Defense Ministry Competitive Research Fund .....	17
4.2.2	NISTEP S&T Indicators Update .....	18
4.2.3	MEXT budget request for JFY2016 .....	18
4.2.4	Japan’s Education Ministry Says to Axe Social Science and Humanities .....	19
5	Grants & Fellowships.....	22
5.1	European Union.....	22

EURAXESS Links Japan Newsletter is a monthly electronic newsletter, edited by EURAXESS Links Japan, which provides information of specific interest to European researchers in Japan and Japanese researchers who are interested in the European research landscape and conducting research in Europe or with European partners.

The information contained in this publication is intended for personal use only. It should not be taken in any way to reflect the views of the European Commission nor of the Delegation of the European Union to Japan.

Please email:

[japan@euraxess.net](mailto:japan@euraxess.net) for any comments on this newsletter, contributions you would like to make, if you think any other colleagues would be interested in receiving this newsletter, or if you wish to unsubscribe.

Editor: Matthieu PY

EURAXESS Links Japan

Country Representative



5.1.1	Open calls under Horizon 2020 .....	22
5.1.2	JEUPISTE project support actions for H2020.....	22
5.1.3	Marie Skłodowska-Curie Actions: .....	23
5.1.4	European Research Council grants .....	23
5.1.5	Interested in hosting a Japanese researcher within your ERC team? .....	24
5.1.6	Erasmus+ Joint Master Degrees and Joint Doctorates .....	24
5.1.7	Come to Europe! EURAXESS ERC, MSCA and Erasmus+ brochure.....	24
5.1.1	Vulcanus in Europe Training Programme Call to Applications	25
5.1.2	National EURAXESS Portals .....	25
5.2	EU Member States and Associated Countries .....	25
5.2.1	Global .....	25
5.2.2	Austria .....	27
5.2.3	Belgium .....	28
5.2.4	Denmark.....	28
5.2.5	Estonia .....	29
5.2.6	Finland .....	30
5.2.7	France .....	31
5.2.8	Germany .....	32
5.2.9	Ireland .....	34
5.2.10	Luxembourg .....	35
5.2.11	Netherlands.....	36
5.2.12	Norway .....	37
5.2.13	Poland .....	37
5.2.14	Slovakia.....	38
5.2.15	Sweden .....	38
5.2.1	Switzerland.....	39
5.2.2	Turkey .....	40
5.2.3	United Kingdom.....	40
5.3	Japan .....	42
5.3.1	JSPS Fellowships Programmes for Research in Japan .....	42



5.3.2	JSPS New Core to Core Programme .....	43
5.3.3	JSPS Grants-in-Aid for Scientific Research “Kakenhi” .....	44
5.3.4	Nichibunken Visiting Research Scholars in Japanese Studies 44	
5.3.5	NICT’s invitations to foreign researchers .....	45
5.3.6	SHIONOGI Science Programme 2015 Call for Proposals.....	45
<b>6</b>	<b>Jobs .....</b>	<b>46</b>
6.1	EURAXESS Jobs.....	46
6.2	Jobs in Europe (selection) .....	46
6.2.1	Lecturer position at University of Tartu, Estonia .....	46
6.2.2	ERC Postdoctoral position at Ludwig Boltzmann Institute for Cancer Research, Austria.....	47
6.2.3	MSCA PhD positions, Tampere University of Technology, Finland .....	47
6.2.4	Other jobs in Europe .....	47
6.3	Jobs in Japan.....	48
6.3.1	JREC-IN .....	48
6.3.2	Faculty and postdoctoral positions at WPI I2CNER (Kyushu University).....	48
6.3.3	Postdoctoral position at WPI MANA (NIMS).....	48
6.3.4	Still open positions (see previous newsletters).....	48
6.3.5	Other jobs in Japan .....	49
<b>7</b>	<b>Events.....</b>	<b>50</b>
7.1	Events in Europe .....	50
7.2	Events in Japan .....	50
7.2.1	Horizon 2020 Info Day 2015: Horizon 2020 Work Programme for 2016-17 and EU-Japan Cooperation.....	50
7.2.2	French Research Day 2015 - JFR 2015   Call for communications .....	51
7.2.3	Programme for Leading Graduate Schools Forum 2015.....	51
7.2.4	Other events in Japan .....	52



# 1 EU Insight – Progress in setting up the Commission’s new scientific advice mechanism

Officially endorsed in mid-May by European Commission (EC) President Jean-Claude Juncker, decisive progress was announced in mid-September regarding the set-up of the Commission’s new instrument for delivering high quality, timely, independent scientific advice across all policy areas—the **Scientific Advice Mechanism (SAM)**. (For more information on the mechanism, refer to the [June 2015 EU Insight here](#).) Coordination of SAM will be the responsibility of an independent high-level group of seven researchers appointed by the European Commission. With over 150 researchers nominated for this group, the set-up of the mechanism is right on track.

*“[W]hen we come to make important policy decisions based on scientific evidence – we need independent scientific advice”. (Carlos Moedas, 15 September 2015.)*

Speaking to European Parliament in mid-September, Commissioner Carlos Moedas, responsible for Science, Research and Innovation within the college of commissioners, stated that “[t]he role of the new High Level Group will be to make sure that the Commission has the best available scientific advice, wherever it comes from. It should guarantee the quality and independence of the advice provided. It should also help identify topics where independent advice is needed”.

To identify the high-level group members, two steps were taken before the summer: the appointment of an Identification Committee and the launch of an open consultation for nominations.<sup>1</sup> The Identification Committee, which is comprised of three members--Sir David Kind, professor Rianne Letschert and António Vitorino, began consultations in mid-July. With the closing of the consultations on 10 September, more than 150 researchers and scientists have been nominated in total. The next phase in the process will be the selection of potential high-level group members by the Identification Committee. These members will be proposed to the European Commission (by end of October). “It is my firm intention that the Group will be launched and have its first meeting before the end of the year”, stressed Moedas.

## Sources and further information

Myklebust, Jan Petter. “150 shortlisted for EC’s science advisory group”. *University World News*. Issue No:382. 19 September

---

<sup>1</sup> Methodology used for the nominations is based on the approach followed by the European Research Council Scientific Council Identification Committee and can be accessed [here](#).



2015. <http://www.universityworldnews.com/article.php?story=20150919073241490>. Accessed 22 September 2015.

Kelly, Éanna. "Over 150 scientists in the frame for new EU science advice panel". *Science Business*. 17 September

2015. <http://www.sciencebusiness.net/news/77202/Over-150-scientists-in-the-frame-for-new-EU-science-advice-panel> . Accessed 22 September 2015.

European Commission's scientific advice mechanism website. <http://ec.europa.eu/research/sam/index.cfm>. Accessed 23 September 2015.

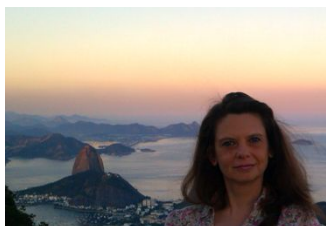
Moedas, Carlos. "Independent Scientific Advice for Policy". Speech. 15 September 2015. European

Commission. [https://ec.europa.eu/commission/2014-2019/moedas/announcements/independent-scientific-advice-policy\\_en](https://ec.europa.eu/commission/2014-2019/moedas/announcements/independent-scientific-advice-policy_en) .

Accessed 23 September 2015.



## 2 In Focus: Marie Skłodowska-Curie Actions.



**Snezana Krstic**, Chem. Eng., Independent researcher and consultant, Belgrade, Serbia.

B.Sc., M.Sc., and PhD from University of Belgrade where she started her academic career. She has been actively involved in activities related to the European research and higher education policies for many years, particularly in activities related to the mobility and professional development of human resources in research. She also has several years of experience in media, communicating issues related to environment, science, society, policy and innovation. Invited speaker at numerous European and international conferences and workshops, cooperating with European Commission, UNESCO, EU Presidency Events, World Science Forum, EU Committee of Region, EUA, NISTEP (Japan), Alexander von Humboldt Foundation (Germany), and many other distinguished organisations and teams. She holds several international and national awards for scientific achievements and excellence. Her Marie Curie grant experience was undertaken in the CERN School of Computing.

[Contact](#)  
[Blog](#)

### 2.1 Interview with Snezana Krstic, Chair of the Marie Curie Alumni Association

#### **Snezana, tell us about your research background and interests**

I am a chemical engineer, but my research background is quite multidisciplinary with a broad interest in issues at the intersection of science, policy, society and innovation. I was involved in research activities as an undergraduate, when I worked on an “intelligent” system for separation of multicomponent liquids, which was of particular importance for the oil, pharmaceutical and petrochemical industry. I continued with issues related to solid waste management and environmental management. My PhD was related to electro-deposited metal powders and particle modelling. Generally, alongside my research career several cross-cutting issues were always present, such as applied informatics and (mathematical) modelling which were also part of my teaching activities at the University of Belgrade, policy analysis and environmental subjects. Engagement in European research and higher education policies has also resulted in scientific and policy analysis contributions related to the internationalisation of higher education and the mobility of researchers. My recent research activities are related to responsible research and innovation and, more precisely, to research integrity, as well as to the multidisciplinary and policy aspects of societal challenges.

#### **Marie Curie – now Marie Skłodowska-Curie under Horizon 2020 - is a prestigious European funding scheme. How did you learn about it?**

Indeed, the Marie Curie Actions are well-known as one of the most prestigious schemes supporting mobility of researchers across and outside of Europe. These opportunities are widely promoted through conferences, the Internet and brochures. However, the strongest impression about the programme, its importance and real value I received was when I had the *opportunity to meet Marie Curie fellows and alumni personally*. I remember them as very successful scientists, engaged in many activities important for researchers, European policies and society. Therefore, I had the opportunity to learn many practical details about Marie Curie Actions and the benefits that they bring to researchers' careers.

#### **What are the most significant benefits you derive as a Marie Curie Fellow in terms of work and networking?**





#### Useful links

Marie Curie Alumni Association – MCAA

<https://www.mariecuriealumni.eu>

MCAA [Facebook](#) page

MCAA sign-up page for MSC fellows to join the association

<https://www.mariecuriealumni.eu/user/register>

**Membership of the MCAA is free of charge**, and open to any past or present Marie Curie researcher;

Marie Skłodowska Curie Actions (MSCA) – European Commission's website providing all relevant information regarding the Marie Skłodowska-Curie programmes, fellowships, calls and applications

[http://ec.europa.eu/research/mariecurieactions/about-msca/actions/index\\_en.htm](http://ec.europa.eu/research/mariecurieactions/about-msca/actions/index_en.htm)

**Marie Skłodowska-Curie Actions** have different types of programmes and provide mobility opportunities suitable for researchers with different career paths and professional experiences. One important benefit is that they (the Actions) provide excellent working conditions, with paid social security and pension contributions, and various opportunities for training and professional development.

My Marie Curie grant experience was undertaken in the CERN School of Computing, where I had the opportunity to learn from an outstanding team of professionals and to meet and cooperate with excellent researchers from different parts of the world. Particularly important for me was that I had the opportunity to gain knowledge beyond my scientific field which was particularly useful for my interdisciplinary and cross-disciplinary orientation and engagements.

In my view, establishment of the Marie Curie Alumni Association (MCAA) has provided additional possibilities to amplify benefits that MSCA offer in terms of networking and career development.

#### **Are there any tips that you would like to give to prospective Marie Skłodowska-Curie Actions (MSCA) candidates?**

My tip is to trust in their achievements and talents and apply for the grant, even if they are at the very beginning of their research careers or coming from afar and small countries which might not be recognised as having strong support for science. Another tip is for scientists to consult the MSCA website, identify programmes suitable for their career stage or career path and find relevant host institutions. It is important to understand that the MSCA grants offer excellent opportunities to cooperate with and gain research experience also in non-academic sectors (industry, business sector). Finally, a tip which may be particularly useful for early stage researchers is to regularly follow MSCA open positions announced on the EURAXESS website and directly apply. This option may be easier for prospective candidates who find it difficult to identify suitable host institutions before their application.

#### **You also hold the MCAA chair position. Could you tell our readers more about the association and its objectives?**

The Marie Curie Alumni Association (MCAA) is an international non-profit organisation based in Brussels that gathers together researchers who have benefited or are still benefiting from the European Commission's prestigious **Marie Skłodowska-Curie** research programmes. The association was established in November 2013, when we held the first General Assembly. Although we are supported by EU funding, we have a truly international character with members in all parts of the world. We also have established many **regional chapters around the world**. Membership is free of charge and open to all fellows and alumni, regardless of the type of MSCA grant received, length of mobility periods, nationality, scientific discipline or current occupation.

Our objectives are oriented toward developing, promoting and harnessing the outstanding potential of our community. We encourage networking, cooperation and mutual understanding amongst our members from different countries,





sectors of the economy and scientific disciplines, providing additional possibilities for career development and professional growth. Our objective is also to foster global relationships within the global research and innovation community, with particular attention paid to our Marie Curie experience. We aim to highlight the accomplishments and excellence of our members by supporting existing and creating new opportunities for dissemination of their outputs. In addition, we also have more operational goals and some of them are related to promoting the values of the Association.

**Why did you decide to promote your experience as MSCA fellow?**

MSCA programmes bring many benefits to their fellows and we believe that our experience can be very valuable for young or experienced researchers who are looking for funding instruments with attractive employment conditions to support their careers and mobility, both internationally as well as between different sectors. This experience can also be useful for prospective host institutions, in academic or industrial settings, for the policy sector, national authorities or international community beyond Europe which may have limited knowledge about European programmes. Finally, it represents science's contribution to society.

**Tell us more about the local chapters in EURAXESS Links regions (ASEAN - encompassing Indonesia, Malaysia, Singapore, Thailand and Vietnam, Brazil, China, India, Japan and North America)?**

The MCAA allows its members to establish chapters on their own initiative and according to their own motivation to cooperate with other members from the region and to contribute to the aims of the association. For this purpose, we open official calls and depending on the quality of the proposed working programmes, we also financially support their activities within the limits of our budget. Currently we have chapters in India, the USA (California), and ASEAN (it should be noted that our ASEAN does not correspond exactly to EURAXESS Links ASEAN). Besides, we also have an informal group of China fellows which in the future may decide to establish an official China chapter. I believe that members from other mentioned countries could be also motivated to establish their chapters in the near future.

**What would you say to local Marie Skłodowska Curie fellows, past and present, to encourage them to join the MCAA association?**

MCAA offers many benefits to its members – opportunities for professional development, networking and cooperation, information on employment opportunities, financial support - which we call Micro-grants - for career development purposes of individual members. We also provide our members with opportunities to promote their work and achievements, amongst fellows and also to large and respected audiences at events organised by ourselves or other organisations, including the European Commission. We work to establish partnerships with various organisations, businesses and other bodies for the benefit of our members. Finally, belonging to a vibrant community of researchers recognised for their outstanding accomplishments and openness

Marie Skłodowska Curie Actions (MSCA) – European Commission's website providing all relevant information regarding the Marie Skłodowska-Curie programmes, fellowships, calls and applications

[http://ec.europa.eu/research/marie-curieactions/about-msca/actions/index\\_en.htm](http://ec.europa.eu/research/marie-curieactions/about-msca/actions/index_en.htm)



for new ideas and cooperation is, in my view, a great reason to join the community.

**If a Marie Curie (Marie Skłodowska-Curie) fellow in any of these countries would like to join MCAA, where should she or he start?**

They should visit our website ([www.mariecurerealumni.eu](http://www.mariecurerealumni.eu)), where they will find the sign-up button at the right upper corner to complete the registration form.

**What are your plans to the future?**

Growth and development in all directions – creating more opportunities for MCAA members, establishing partnerships and fostering fruitful connections with various organisations and the business sector, and actively contributing to important activities in European, international and local settings.

**Thank you for your time!**

You are welcome! It was a great pleasure to cooperate with the EURAXESS Links team and I am particularly glad that I had the opportunity recently to visit Brazil and meet the Brazilian research community.

**2.2 About the Marie Skłodowska-Curie actions (MSCA)**

2014-2020 budget: 6.162 billion euro.

The *Marie Skłodowska-Curie Actions* are **European grants** offered to **researchers at all career stages** and encourage **transnational, intersectoral and interdisciplinary mobility**.



Watch the MSCA video [here](#).

The expected impact of the MSCA in Horizon 2020 includes the support of ca. 65,000 researchers, including 25,000 PhD candidates, ca. 200,000 scientific publications in high impact peer-reviewed journals, and ca.1,500 patent applications.



Figure 1: The global reach of the MSCA programme.



Figure 2: Overview of the different funding schemes under the Marie Skłodowska Curie actions

The different funding schemes within the MSCA are shown in Figure 2:

Innovative Training Networks	<b>ITN</b>	Support for doctoral and early-stage training Training Networks, Industrial Doctorates, Joint Doctorates
Individual Fellowships	<b>IF</b>	Support for experienced researchers undertaking international and inter-sector mobility: European Fellowships and Global Fellowships Dedicated support for career restart and reintegration
Research and Innovation Staff Exchange	<b>RISE</b>	International and inter-sector cooperation through the exchange of staff
Co-funding of programmes	<b>COFUND</b>	Co-funding of regional, national and international programmes: - doctoral programmes - fellowship programmes

Organisations from whatever sector and country can participate in MSCA projects. However, Japanese organisations are not eligible to direct funding.

### 2.3 MSCA - What’s in it for Japanese researchers?

1. **Innovative Training Networks (ITN)** is the main European doctoral training programme, with a special emphasis on non-academic sector participation and the innovation dimension.

**Applications from Japanese research institutions:** organisations such as universities, research centres or companies, which want to propose a research training network can join a consortium to submit a proposal (annual calls).

**Applications from Japanese researchers:** individuals can apply to the PhD positions created by these networks, including Industrial Doctorate and Joint Doctorate. They are advertised on the [Euraxess Job portal](#).

2. **Individual Fellowships (IF)** are for experienced researchers to undertake their own research project at a host organisation in another country, thus gaining new skills through advanced training and possibly intersectoral mobility.

**Researchers based in Japan** can apply for a European fellowship, choosing to apply either for a re-integration grant or a scientific grant.

**Researchers based in Europe** can apply for a global fellowship to carry out research in a third country such as Japan and to return to Europe. They can also apply for a European fellowship for mobility within the [EU or associated countries](#).

Calls are annual and advertised on the [Horizon 2020 Participant Portal](#).

There are usually two MSCA IF calls per year, in spring and autumn. Don't miss them, check our Grants and Fellowship section!



**3. Research and Innovation Staff Exchange (RISE)** enables international and intersectoral collaboration, based on short-term staff exchanges between organisations worldwide. The RISE programme is the successor programme of the previous IRSES under FP7.

**Japanese research institutions** can join a consortia as partner, but can't receive direct funding from the European Commission for the secondment of their researchers.

**4. Co-Funding of regional, national and international programmes (COFUND)** calls are open to European research institutions and is thus not relevant for Japanese research organisations. It results in many high-quality fellowship or doctoral programme positions which include transnational mobility and are advertised on the Euraxess portal.

**Japanese researchers** can apply directly to COFUND positions advertised on the [EURAXESS job portal](#).

Sources: EURAXESS Links Network newsletter, [Issue 5](#), April 2014; [Come to Europe brochure](#); [Marie Skłodowska Curie Actions \(MSCA\) – European Commission's website](#).

### **EURAXESS Links Japan is seeking Marie Skłodowska-Curie Fellows or Alumni!**

Are you a former or current Marie Skłodowska-Curie fellow? Do you currently live in Japan? You want to share your experience and take part in EURAXESS events?

Contact us by email [japan@euraxess.net](mailto:japan@euraxess.net) to discuss collaboration opportunities and help us promote the European Research Area.



## 3 EURAXESS Links Japan activities

### 3.1 EURAXESS Science Slam Japan 2015

The finalists of the third edition of the **EURAXESS Science Slam Japan** are now selected! The lucky slammers are:

- + Muhammad FAJAR - Master student - Tokyo Institute of Technology
- + Jinze YU - PhD candidate - University of Tokyo
- + Shogo MATSUMOTO - Master student - Tokyo Metropolitan University
- + Lucy LAHRITA - Research student - Hokkaido University
- + Keisuke MOTOKI - Master student - Waseda University / JAXA



The finals will be hosted by **Tokyo Metropolitan University** on **23 October** starting at **4PM**. [Registration is now open!](#)

Located in Hachioji town, the Tokyo Metropolitan University campus is a three-minute walk from the Minami-Osawa station, only 45 minutes away from Shinjuku by train!

#### 3.1.1 What's the Slam like when in the audience?

Lots of fun too!

- Slammers present their own research in English and in 10 minutes.
- YOU will judge them and select the best Slammer; who wins a trip to Europe!
- A good slammer is:

A good communicator (you understand his/her research!)

A good entertainer (he/she is creative and gets you interested!)

- By debating with other attendees, YOU also improve your communication skills!

- Register NOW, enjoy the Slam, participate in the debates and spend an evening of fun with colleagues and fellow researchers and enjoy fine food and drinks!

Further information and registration on our website:

<https://scienceslamjapan2015.splashthat.com>





Call for abstracts to the European researchers active in Japan  
Present your research, provide insight on your grant/employment situation, discuss of your future career, learn from others, connect and exchange!

**European Research[ers'] Day**

Submit to: [japan@euraxess.net](mailto:japan@euraxess.net)  
Call deadline: 2 October 2015  
Event: 11 Dec.2015, Tokyo



Delegation of the European Union to Japan

euraxess RESEARCHERS IN MOTION

### 3.2 European Research(ers') Day, 11 December, Tokyo

This will be the very first edition of our event targeting the community of European researchers in Japan: the [European Research\(ers'\) Day](#) will give you an opportunity to **showcase your research**, to **discuss your career experience** and to **gain insights and tips on how to improve**, to **network within the European Diaspora** (and beyond...) in Japan!

The event will take the form of a full-day workshop on 11 December 2015.

#### Features of the event:

- A short session on possibilities with Europe (funding/cooperation/mobility/relocation),
- Presentation and poster sessions by European researchers on: their research, their career and personal experiences especially in Japan; and their future plans (in relation to Europe when relevant),
- One or several discussion panels/sessions on researcher careers and mobility/challenges of relocating to Europe,
- A networking reception.

The main part of the event will be the presentations given by the researchers themselves (you!!): 15 to 20 speakers and 5 to 10 posters, from a wide range of disciplines, profiles and countries within the EU-28.

#### To be eligible you must:

- Be a national from one of the EURAXESS countries,
- Currently have an affiliation with a Japanese research institution, university, or have an R&D position at a company based in Japan,
- Be able to attend the event on 11 December 2015 in Tokyo (Delegation of the EU to Japan).

To apply, send us your abstract before October 2<sup>nd</sup>!

Further instructions on our [webpage](#)!



## 4 News & Developments

### 4.1 EU, Member States and Associated Countries

#### 4.1.1 Commission invests EUR 70.5 million for innovative SMEs under Horizon 2020 SME Instrument

Fifty-nine SMEs from 16 countries have been selected in the latest round of Horizon 2020 SME Instrument Phase 2. For each project, the participants will receive up to EUR 2.5 million to finance innovation activities and the development of their business plans.

The companies will also be entitled to benefit from up to 12 days of business coaching.

The European Commission received 962 proposals under Phase 2 by the second cut-off date of 2015 on 17 June. 357 received an evaluation score above the application threshold and 44 or 12.3%, amounting to total project costs of EUR 93.7 million, have been selected for funding.

Full article: [European Commission > Horizon 2020](#)

#### 4.1.2 Europe celebrates its top young scientists

The former Milan train factory, Fabbrica del Vapore, buzzed with intense activity over the last few days. One-hundred and sixty-nine young researchers aged between 14 and 20 presented their science projects to an international jury in the hope of picking up one of the prestigious prizes. The honours they were competing for were part of the 27th annual European Union Contest for Young Scientists (EUCYS), which concluded with the awards ceremony today (21 September 2015). Aside from the right to count themselves amongst the best young scientists in Europe, the winners also divided up a total of EUR 56 000 in prize money, as well as other coveted prizes such as science trips to Europe's top laboratories and the Intel International Science and Engineering Fair in the US.

Carlos Moedas, European Commissioner for Research, Innovation and Science said: "My warmest congratulations to the winning young scientists! It's good to see so much young talent will enrich science generations to come and help us find new answers to challenges of the future."

Full article: [European Commission > Research & Innovation](#)

#### 4.1.3 Commission presents key research and innovation actions contributing to the Energy Union for all EU Member State

on 21 September, the European Commission presented [in Luxembourg](#) the new Integrated Strategic Energy Technology Plan ([SET Plan](#)). The SET Plan





promotes research and innovation efforts across Europe by supporting technologies with the greatest impact on the EU's transformation to a low-carbon energy system.

The new SET Plan proposes ten research and innovation actions to accelerate the energy system's transformation and create jobs and growth while ensuring the European Union's leadership in the development and deployment of low-carbon energy technologies. It promotes cooperation amongst EU countries, companies, research institutions, and the EU itself. The SET Plan is the first deliverable contributing to the fifth dimension of the Energy Union strategy which is focused on research, innovation and competitiveness

In the following months, EU Member States and stakeholders shall translate these actions into specific recommendations for new research and innovation programmes and activities at the European, national and regional level.

**Full article:** [European Commission > Research & Innovation](#)

#### **4.1.4 Over 150 scientists in the frame for new EU science advice panel**

Over 150 scientists have put their names forward to join the EU's new science advice panel, the Commissioner for Research Carlos Moedas said this week.

Moedas announced the new Scientific Advice Mechanism (SAM), a seven-member panel of experts to oversee the process of how the Commission gets scientific advice on controversial issues like shale gas or genetically modified organisms, [in May](#).

He enlisted a three-person team, headed by the UK special representative for climate change, David King, to help pick the final panel. King and two others, the chair of the Dutch Royal Academy of Sciences Rianne Letschert and former Justice Commissioner António Vitorino, will filter the submissions and propose a shortlist to Moedas by the end of October.

"It is my firm intention that the group will be launched and have its first meeting before the end of the year," Moedas said.

**Full article:** [Science | Business](#)

#### **4.1.5 DocPro: a brand new tool to connect doctorate holders and companies**



[DocPro](#) is an online platform that helps PhDs to highlight their professional and personal skills for employers. It may be used by PhDs from all scientific fields, from STEM to Humanities, and from all countries. The tool is available in French and English.

DocPro was developed by the [Association Bernard Gregory](#) (ABG), with the aim to have companies, doctorate holders and doctoral programmes managers share the same understanding of the skills a doctorate develops.



On this platform:

- **Doctorate holders** can pinpoint the skills they developed during their doctorate and increase their communication efficiency towards employers, especially by giving appropriate examples from their own experience;
- **Companies** can present the kind of profiles they are looking for and increase their attractiveness;
- **Heads of doctoral programmes** can identify the needs for skills development and adapt their training offers for their own doctoral candidates.

Access the platform [here](#)

Source: [ABG](#)

## 4.2 Japan

### 4.2.1 Defense Ministry Competitive Research Fund

The Ministry of Defense (MOD) has established, for the first time in history in Japan, a competitive research fund which Japanese public and private research institutions can apply for.

The MOD has long conducted R&D on an intramural basis, only contracting out the manufacturing process. However, realising both the serious need for innovative new technologies and the increasingly blurry borderline between civilian and defense technologies, MOD has made this epoch-making decision.

Named the National Security Technology Research Promotion Fund (tentative translation), the new fund had a JFY2015 budget of JPY 300 million (EUR 2.2 million). Funded projects will each receive about JPY 30 million (EUR 220,000) for up to 3 years.

Any Japanese researchers affiliated with a Japanese research institution may apply to the fund through their institution. Applications were called for related to 28 research themes identified by MOD, including Sound Reflection Control by Meta Material Technologies; Advancement of the Laser System Light Source; Visualization of Shock Waves in the Air; Use of Big Data to Solve Social Security Issues; Effective Under-water Energy Transmission; and Advancement of Materials Functions by Nano Fiber.

Review results will be announced at the end of October 2015 and will be available on the MOD homepage.

Source: NSF Tokyo Office Weekly Wire, [MOD](#) (Japanese only)



#### 4.2.2 NISTEP S&T Indicators Update

The **National Institute of Science and Technology Policy** (NISTEP) presented the updated S&T indicators to the Council for Science and Technology Policy (CSTI) members.

Several elements presented are of particular interest:

- Japan's GERD (GDP percentage used to R&D purposes) was 3.75% in 2013, but the ratio of government R&D investment in relation to the total is one of the lowest amongst major nations (20%, against roughly 40% in France for example);
- The ratio of industry's investment in university R&D to the total university-based R&D is the lowest amongst major nations;
- The ratio of Full Time Equivalent researchers to the total labor force is extremely high, at almost 1%; and only second to Korea; however this figure has stagnated for more than ten years now. Most major European countries show a ratio of about 0.5%, but all show a steady increase of about 0.1% every ten years and are thus coming close to Japan's figures;
- New enrollments in PhD programmes peaked in 2003 at about 180,000 and have been declining ever since, down to 150,000 last year;
- The number of research papers produced by researchers based in Japan has been stable for the past decade, while this number has been increasing in other countries, lowering Japan's global rank. The fall is sharper when looking at most cited articles, whilst European countries show an almost x2 increase;
- Japan continues to account for a large share of patent families;
- Amongst Japanese researchers the male to female ratio is still of about 7 to 1 in 2014. In general, male researchers are employed by industry, while more female researchers are employed in universities;
- Japanese researchers holding a PhD are more prone to be employed by universities than by industry, regardless of gender.

Source: [NISTEP](#) (Japanese only)

#### 4.2.3 MEXT budget request for JFY2016

The **Ministry of Education, Culture, Sports, Science and Technology** (MEXT) accounts for around 65% of the Japanese government's expenditure on STI. The Ministry has requested an additional budget increase of 9.8%, which would bring the total expenditures to EUR 44 billion for 2016, up from EUR 39 billion in 2015.

MEXT seeks a 26.6% increase in their sports budget to around EUR 300 million. Preparations for the 2020 Olympics and Paralympics account for around half of this funding, but there is no mention of funds to support STI in relation to the Olympics.



On educational expenditures, particularly for the administrative and operational grants of the national universities, budgetary increases of EUR 310 million are requested (+4% increase on last year), bringing the total amount of funding to 8.4 billion. This includes funding for a new scheme that aims to enhance the diversity and strengths of particular institutions along such lines as their engagement with their region, their educational and research strengths, or to accelerate their global position (around 300 million). An increase in the budget for joint-use facilities and cooperative research support, including for strategic international cooperation, is also sought which would bring this level of funding to EUR 290 million (an increase of 21% on last year).

To support international student mobility, a budgetary increase of EUR 17 million (+6% on last year) is requested, bringing the total to EUR 280 million. This would increase the numbers of students dispatched overseas from 22,000 to 25,000, and increase the receipt of overseas students from 7,000 to 9,000.

MEXT has a separate line for the Science and Technology budget. Here, an increase of 18.2% has been requested, increasing MEXT's expenditure from EUR 7.1 billion to EUR 8.4 billion. This budgetary area follows the priorities from the revised Japan Revitalisation Strategy (Growth Strategy), and the Comprehensive STI Strategy 2015 both of which were published in June 2015.

Source: [MEXT](#) (Japanese only)

#### 4.2.4 Japan's Education Ministry Says to Axe Social Science and Humanities

[Although quite long, we reproduce here in its entirety a [Social Science Space](#) article continuing on the theme of the danger of cutting HSS in Japan (see last month edition), as the issue is of prime importance]

'At least 26 of Japan's 60 national universities that have departments of the humanities or the social sciences plan to close those faculties after a ministerial request from the Japanese government, according to [a new survey of university presidents](#) by *The Yomiuri Shimbun* newspaper.

A 8 June letter from Hakubun Shimomura, the Minister of Education, Culture, Sports, Science and Technology, to all of Japan's 86 national universities and all of the nation's higher education organisations asks them to take "active steps to abolish [social science and humanities] organisations or to convert them to serve areas that better meet society's needs." The call focuses on undergraduate departments and graduate programmes which train teachers, and includes the areas of law and economics.

To back up the request – which was made "in the light of the decrease of the university-age population, the demand for human resources and the quality control of research and teaching institutions and the function of national universities" – the ministry pointed to the financial support it provides the schools in the coming fiscal year.

This focus on bending universities to serve "areas which have strong needs" (and the implication that social science and humanities can't help in that regard)



are of a piece with Prime Minister Shinzo Abe's economic ideas, or 'Abenomics,' that focus resolutely on direct and immediate industrial and employment benefits, argues [an editorial in \*The Japan Times\*](#). The newspaper recalled Abe's remarks in 2014 before the Organization for Economic Cooperation and Development, in which he said, "rather than deepening academic research that is highly theoretical, we will conduct more practical vocational education that better anticipates the needs of society." ([With Abenomics now stalling](#), Abe has also portrayed Japanese science and technology as in peril, [telling the nation's Council for Science, Technology and Innovation](#) in June that "the frontlines of Japan's research fields have weakened, causing our research capabilities to lag behind others)."

*The Times* criticized Abe for shortsightedness:

Pursuing studies of humanities and social sciences may not produce quick economic results. But shunning them risks producing people who are only interested in the narrow fields of their majors. Studies of literature, history, philosophy and social sciences are indispensable in creating people who can view developments in society and politics with a critical eye. In this sense, Shimomura's move may be interpreted as an attempt by the government to produce people who accept what it does without criticism. Abe, Shimomura and education ministry officials should realize that a decline in the study of humanities and social sciences will likely hamper the growth of creative work even in the fields of technology.

According to *The Yomiuri Shimbun*, of the 26 universities cutting their humanities and social science offerings, 17 intend to stop recruiting students in the areas and all of the 26 plan to stop offering so-called "no certificate" courses that don't require latent prospective teachers to obtain a teaching certificate in those areas.

While some organisations, such as the executive board of the Science Council of Japan, made quick and strident objections to the ministry's request, even some ostensible supports of the disciplines couched their support deferentially. For example, Shojiro Nishio, the new president of Osaka University (the largest national university in Japan), both backed the idea of the value but also encouraged them to "think proactively about what you can do," reported Kiyomi Arai of *The Yomiuri Shimbun*.

According to Arai:

Nishio says achievements are not easily seen in the fields of humanities and social sciences, but these studies are indispensable as they bring diversity to society. Specializing in data engineering, Nishio is a world leader in information technology, particularly in analyzing big data. As a researcher, he believes studies in the humanities field do not tend to have a "strong focus on responding to the demands of society."

Not every university was so circumspect, and some notable institutions, such as the University of Tokyo and Kyoto University, said they had no current intention of complying. The president's office of Shiga University told *Nomiura* that,



“Democracy cannot be preserved if the ‘intellectual knowledge’ of humanities and social science studies is cast aside.”

The Science Council of Japan [put out a statement](#) late last month expressing its “profound concern over the potentially grave impact that such an administrative directive implies for the future of the HSS {humanities and social sciences} in Japan and the very idea of the university itself, irrespective of whether it is privately or publicly funded.” That statement acknowledges that HSS could do a better job of clarifying its value, even as it stresses how integral HSS is to a “balanced” university and to the larger Japanese society.

The International Social Science Council (to which the Science Council of Japan belongs) [applauded the council's statement](#) and for addressing how HSS is “integral to advancing knowledge on the challenges facing society today, both in Japan and internationally. They play a unique and vital role in critically thinking about and assessing the human condition, and for the understanding, foresight, governance and continued development of contemporary societies”.

Source: [Social Science Space](#)





# 5 Grants & Fellowships

## 5.1 European Union

### 5.1.1 Open calls under Horizon 2020

**Horizon 2020** is the **largest EU research and innovation programme** ever. Almost EUR 80 billion in funding is available over seven years (2014 to 2020), in addition to the private and national investment that this money will attract.

Access all **25 open calls** on the [Horizon 2020 Participant Portal](#).

Please note that the calls are allocated to the three pillars of Horizon 2020:

- **Excellent Science:** Around EUR 3 billion, including EUR 1.7 billion for grants from the European Research Council for top scientists, and EUR 800 million for Marie Skłodowska-Curie fellowships for younger researchers.
- **Industrial Leadership:** EUR 1.8 billion to support Europe's industrial leadership in areas like ICT, nanotechnologies, advanced manufacturing, robotics, biotechnologies and space.
- **Societal Challenges:** EUR 2.8 billion for innovative projects addressing Horizon 2020's seven societal challenges, broadly thematised as: health; agriculture, maritime and bioeconomy; energy; transport; climate action, environment, resource efficiency and raw materials; reflective societies; and security.



- There is a guide, explaining the Horizon 2020 programme in greater detail available for download [here](#).

### 5.1.2 JEUIPSTE project support actions for H2020

The **JEUIPSTE project** aims at **promoting EU-Japan cooperation in Science, Technology and Innovation** through **support to policy dialogues**, deployment of bilateral **information services**, organisation of networking events focusing on specific technologies and/or societal challenges, operation of **help desk services** (in cooperation with NCP Japan) and contribution to the development of human resources for collaborative projects.

The **JEUIPSTE project can help if you need advice or information regarding Horizon 2020** and Europe-Japan cooperation.

Further information: [JEUIPSTE](#)



To find out more about **EU funding opportunities** for your research or innovation project please visit the [European Commission's Participant Portal](#) where all calls are published.

**International researchers are also invited to join the [database of independent experts](#) for European research and innovation.** Distinguished specialists are strongly encouraged to join the database of independent experts, through which they can participate in the evaluation of project proposals and monitoring of actions, submitted under Horizon 2020.





A web-streamed training focusing on the IF (Individual Fellowships) and Cofund calls has also been released [here](#).

[Net4Mobility](#) is managing a blog with Frequently Asked Questions on MSCA actions (IF, ITN, COFUND, RISE). Net4Mobility is the Marie Skłodowska Curie Actions National Contact Point project with the objective to increase the knowledge among the NCPs.

This blog can also be useful to individual mobile researchers, especially the IF (Individual Fellowships) section.

Access the blog [here](#)

### 5.1.3 Marie Skłodowska-Curie Actions:

The Marie Skłodowska-Curie actions ([MSCA](#)) support research training and career development focused on innovation skills. The programme funds worldwide and cross-sector mobility that implements excellent research in any field (a "bottom-up" approach).

Through various streams, MSCAs support researcher mobility at different stages of their career:

- **International Training Network ([ITN](#))** for PhD studies (for Japanese candidates mostly through application via the [EURAXESS Jobs](#) database -"more filters" tab, →"Marie Curie" link),
- **Individual Fellowships ([IF](#))** for postdoctoral fellowships or research stays (without age limit),
- **Research and Innovation Staff Exchange ([RISE](#))** for repeated short research stays over a several years span.

Open and upcoming MSCA calls:

[COFUND \(closing 1 October\)](#)

Follow Marie in video and [learn more about the Marie Skłodowska-Curie actions on our YouTube channel!](#)

### 5.1.4 European Research Council grants

The European Research Council's ([ERC](#)) mission is to encourage the highest quality of research in Europe and to support investigator-driven frontier research across all fields, on the basis of scientific excellence through competitive funding.

Being 'bottom-up' in nature, the ERC approach allows researchers to identify new opportunities and directions in any field of research, rather than being led by priorities set by politicians. It is a highly competitive funding scheme (10% success rate on average for Starting and Consolidator grants, 14% for Advanced grants).

Researchers from anywhere in the world can apply for a European Research Council (ERC) [grant](#) to come to Europe and conduct research (for at least 50% of their working time). Currently, over 300 ERC grantees out of nearly 4,000 are non-Europeans. Research teams set up by ERC grantees are highly international – an estimated 20% of team members are non-Europeans.

Open and forthcoming ERC calls:

[ERC Proof of Concept \(deadline 2 October\)](#)

[ERC Starting Grant \(deadline 18 November\)](#)



Watch the ERC Step by Step video for a quick description of each scheme!



European Research Council  
Established by the European Commission

### 5.1.5 Interested in hosting a Japanese researcher within your ERC team?

The European Research Council Executive Agency signed an Implementing Arrangement with the Japan Society for the Promotion of Science (JSPS) on 29 May 2015.

Under this arrangement, **ERC will provide opportunities for recipients of JSPS Research Fellowships** for Young Scientists to **pursue research collaboration with European colleagues** already supported by the ERC.

A **first ERC Call for expression of interest to ERC PIs and teams is expected to be launched later in 2015**, so that the first Japanese visits may take place in 2016.

Further information [here](#)

### 5.1.6 Erasmus+ Joint Master Degrees and Joint Doctorates

Erasmus+ Joint master degrees ([JMD](#)) and Joint Doctorates ([JD](#)) are offered by **international consortia of higher education institutions**.

A **JMD** corresponds to a high-level integrated international study programme of 60, 90 or 120 ECTS (corresponding to one or two years of studies). Students at **master's level can apply for these degrees** which take place in at least two of the programme countries represented in the consortium. **121 different consortia are proposing JMDs**. Between approximately 13 and 20 student scholarship holders and 4 invited scholars/guest, lecturers can take part in each programme annually. In addition to the student scholarship holders, self-funded students can enrol.

**JDs are doctoral-level training and research programmes** and offer **fellowships covering up to three years** of doctoral activities. **29 consortia are proposing JDs in various fields**.

Applications on the Japanese side must come through an higher education institution.

**Deadlines: various** (depending on each consortium's rules for application)

Joint Master Degrees: further information [here](#), list of the consortia [here](#)

Joint Doctorates: further information and list of consortia [here](#)

### 5.1.7 Come to Europe! EURAXESS ERC, MSCA and Erasmus+ brochure

A new EURAXESS brochure: "[Come to Europe!](#)" presenting a few bullet points on the three main European opportunities for researcher mobility (ERC, MSCA and Erasmus+) is [available online on our website](#).

Please check it out and share with your colleagues!





### 5.1.1 Vulcanus in Europe Training Programme Call to Applications



**Vulcanus in Europe** is a training programme for Japanese students that started in 1996. It consists of **industrial placements for Japanese citizens studying engineering or science at the Master level**.

The programme starts in April and ends in March of the following year in order to accommodate the academic year in Japan. Students attend a **one-week seminar on the EU**, a **four-month intensive Japanese language course** and an **eight-month traineeship in a Japanese company**.

**Applicants, who should be at least in their third year of studies** (3<sup>rd</sup>-4<sup>th</sup> year of undergraduate studies or 1<sup>st</sup> year of Master), **are selected on the basis of their academic record, their English proficiency**, their motivation, their attitude to EU-Japan relations and their ability to adapt to a different culture.

**About 20 grantees per year.**

**Deadline: 13 October**

Further information [here](#) (Japanese only)

### 5.1.2 National EURAXESS Portals

The **latest information on open calls for national grants and fellowships** in the 40 member countries of the EURAXESS network can be accessed on the respective **national EURAXESS portals**:

[Austria](#), [Belgium](#), [Bosnia-Herzegovina](#), [Bulgaria](#), [Croatia](#), [Cyprus](#), [Czech Republic](#), [Denmark](#), [Estonia](#), [Faroe Islands](#), [Finland](#), [France](#), [Macedonia](#), [Germany](#), [Greece](#), [Hungary](#), [Iceland](#), [Ireland](#), [Israel](#), [Italy](#), [Latvia](#), [Lithuania](#), [Luxembourg](#), [Malta](#), [Moldova](#), [Montenegro](#), [Netherlands](#), [Norway](#), [Poland](#), [Portugal](#), [Romania](#), [Serbia](#), [Slovakia](#), [Slovenia](#), [Spain](#), [Sweden](#), [Switzerland](#), [Turkey](#), [UK](#).

Besides providing information on funding opportunities for incoming international and European researchers, staff at the [EURAXESS Service Centres](#) offer individual assistance on all aspects of researcher mobility.

## 5.2 EU Member States and Associated Countries

### 5.2.1 Global

#### 5.2.1.1 IIASA Postdoctoral Fellowships

The **International Institute for Applied Systems Analysis (IIASA)**, based in Austria, conducts **policy-oriented research** into problems of a global nature using an interdisciplinary approach: Energy and Climate Change, Food and Water, Poverty and Equity.

It provides **full funding for a number of postdoctoral researchers** each year. Scholars conduct their own research on topics closely related to IIASA's research agenda. The fellowships, of a **2-year duration**, cover a monthly allowance, relocation expenses and some travel costs.





Candidates of **any nationality holding a PhD degree with less than 5 years of postdoctoral experience** may apply.

Two calls per year.

**Next deadline: 1 October**

Further information [here](#)

#### **5.2.1.2 IIASA's Young Scientists Summer Program**

IIASA proposes each year a **three month summer programme for young scientists**, which offers research opportunities to talented young researchers whose interests correspond with IIASA's ongoing research on issues of global environmental, economic and social change.

As Japanese organisations [fund this programme](#), **Japanese students are given priority** (among others).

Applicants should be **advanced post graduate students** (about 2 years prior to receiving their PhD).

Next Summer Programme: June to August 2016.

**Call opens on 1 October 2015, closes on 11 January 2016**

Further information [here](#)

#### **5.2.1.3 EUI Max Weber Postdoctoral Fellowships**

The **Max Weber Programme is the largest international postdoctoral programme in the Social Sciences and Humanities in Europe**. It offers around 50-55 fully funded fellowships to qualified researchers from anywhere in the world.

The programme is **open to applicants who are within 5 years of the completion of their PhD**. The language of the programme is English and therefore applicants' expected level of English proficiency is level C1 of the Common European Framework of Reference (CEFR).

The majority of **Max Weber Fellowships are for one year**.

**Deadline: 25 October**

Further information [here](#)

#### **5.2.1.4 EUI Jean Monnet Postdoctoral Fellowships**

The Robert Schuman Centre for Advanced Studies ([RSCAS](#)) offers **one-year Jean Monnet Fellowships** (renewable for one more year) to scholars who have **obtained their doctorate more than 5 years prior to the start** of the fellowship. The Fellowship programme is open to post-docs, and tenure track academics of all nationalities. The Centre offers up to 20 fellowships a year.

The research proposal should fit well with one of the Centre's main research themes:

- Integration, Governance and Democracy



- Markets and Governing Money
- 21st Century World Politics and Europe

**Deadline: 25 October**

Further information [here](#)

### 5.2.1.5 CERN: Postdoc Fellowship Programme

The [CERN](#)'s **Non-Member State Fellowship Programme** in **Theoretical Physics** awards **two postdoctoral fellowships per year**.

Nationals of any country but [member states](#) (including Japan) with a PhD in theoretical physics and a maximum of 10 years of postdoctoral experience are eligible.

The fellowships covering **monthly stipend and travel expenses**, are granted for a **two-year period** and can on exception be extended to a third year.

**Deadline: 15 October**

Further information [here](#)

## 5.2.2 Austria

### 5.2.2.1 Lise Meitner Programme for Scientists from Abroad

This programme targets **highly qualified scientists of any discipline** who can contribute to the scientific development of an Austrian research institution by working at it. It funds **12 or 24 months postdocs** with an annual personal allowance between EUR 62,500 and EUR 68,700.

Requirements: completed doctoral studies, record of international scientific publications, invitation from an Austrian research institution and co-application with an Austrian researcher. No age limit.

**Applications continuously reviewed.**

Further information [here](#)

### 5.2.2.2 Erwin Schrödinger Fellowships

The purpose of the **Erwin Schrödinger Fellowships** is to allow young scientists doing research in Austria to perform work stays at leading foreign research institutions.

**Young and highly qualified scientists of any discipline and nationality** currently affiliated with an Austrian research institution may apply for research stays abroad of **10 to 24 months in length** (without return phase) or a stay of 16 to 36 months in length (including return phase of 6 to 12 months). The **applicants must find and obtain an invitation from host institutions** both abroad and in Austria (in case they apply to the fellowship scheme including a return phase).

**Applications accepted continuously**





Further information [here](#)

## 5.2.3 Belgium

### 5.2.3.1 FWO outgoing travel grants



This [FWO](#) grant supports **research stays abroad** of a **5 weeks to 12 months duration**. The grant **covers travel expenses** and provides a fixed daily allowance.

**Postdoctoral candidates** can be of **any nationality**. **Other candidates** must be **citizens of an EU Member State** or Switzerland, have obtained their degree in an EU Member State or Switzerland, or have been affiliated in the past to a Flemish university for more than one year. **All applicants** must currently be **affiliated with a Flemish university or research institution**.

**Applications continuously reviewed.**

Further information [here](#)

### 5.2.3.2 BEWARE Fellowships (incoming mobility)



The BEWARE FELLOWSHIPS (BELgium WALLonia REsearch) programs are co-financed by the COFUND program of the European Union (FP7 - Marie Curie Actions).

The **BEWARE Fellowships promote the mobility of foreign researchers to Belgium and the relocation of Belgian researchers**, the only condition being to have spent less than 12 months over the last three years in Belgium.

**BEWARE FELLOWSHIPS Industry** will grant 57 mandates over 5 years, in order to enable SMEs or accredited research centres to benefit from the expertise of highly qualified foreign researchers (or Belgian expatriates).

**BEWARE FELLOWSHIPS Academia** focuses on technology transfer. These fellowships also run over five years and will fund a total of 80 mandates for foreign researchers to perform a research stay in a French-speaking university, in partnership with a Walloon company. Each mandate has a duration of 18 to 36 months, of which 25% must be spent in the company.

Rolling call with several deadlines per year.

**Next deadlines: 30 November (Industry)**

**30 October (Academia)**

Further information [here](#)

## 5.2.4 Denmark

### 5.2.4.1 Danish Council for Independent Research Call for Proposals



The **Danish Council for Independent Research (DFI)** supports **independent research** based on the researchers' own ideas, within and across all the main fields of science. It supports **specific and time-limited research activities** aiming to strengthen and develop the internationalisation of Danish research.





The Council therefore **welcomes applications that involve international activities.**

DFF calls for proposals in various programmes, including **mobility grants** (*MOBILEX*, *International Research Stays*), **funding schemes** (*Sapere Aude* and *Research Project*), **fellowships** (*Individual Postdoctoral Grants*). Most of these programmes are **open to applications from Danish as well as foreign researchers.**

Two application rounds per year.

**Next deadlines: 23 to 30 October** (depending on the [field of study](#))

Further information [here](#)

## 5.2.5 Estonia

### 5.2.5.1 Kristjan Jaak Scholarships

The **Kristjan Jaak Scholarship programme supports outgoing mobility**, both short and long-term, for **master's and doctoral students** as well as for teaching staff. Four categories of grants are proposed:

Applications are accepted in **four categories.**

- **DOCTORAL STUDY ABROAD** is for students who are starting or continuing studies at the doctoral level at a foreign university and who are prepared to commence employment in Estonia after graduation.
- The **FORMAL STUDIES** grant supports study abroad for one academic year. The grant may be applied for by doctoral students and first-year master's students.
- The **PART-TIME STUDIES** grant provides assistance for study abroad lasting 1-5 months.
- The grant for **FOREIGN VISITS** provides support for visits abroad lasting 3-21 days. The grant may be applied for by doctoral, master's students and researchers (35 and under).

**Prior or present affiliation to an Estonian institute as well as Estonian language proficiency is required** to apply for a scholarship.

**Next deadlines: 1 December** (Foreign Visits: short term)

**1 October** (Part-time studies)

Further information [here](#)

### 5.2.5.2 Archimedes Foundation's short-term visits for doctoral students

The programme, offered by the [Archimedes Foundation](#), supports the **short-term study and research activities of visiting PhD students in Estonian universities.** The scheme is aimed at making Estonian universities and doctoral studies more international.





Candidates of **any nationality but Estonian**, engaged in **doctoral studies in any field** and affiliated with an institution outside of Estonia can apply for visits of duration of **1 to 10 months**. The scheme covers a **monthly stipend** for the whole stay duration as well as a **travel allowance**.

**Deadlines vary** for each host institution (Estonian universities and Higher Education institutions)

Further information [here](#)

### **5.2.5.3 Estophilus Scholarship**

The **Estonian Institute** offers **Estophilus Scholarships** to **foreign master's or doctoral students, and foreign researchers holding a PhD** in order to perform a **research stay in Estonia** to write a research paper on an Estonia-related topic or to gather material for it.

The scholarship is designated to **cover subsistence expenses, tuition fees and research costs for a period ranging from five to ten months**. The scholarship for a five-month period is EUR 2,500.

Knowledge of Estonian is an advantage, but not a requirement.

Two calls per year.

**Next deadline: 1 October**

Further information [here](#)

## **5.2.6 Finland**

### **5.2.6.1 CIMO Fellowships**

The CIMO Fellowships programme is **open to young doctoral level students and to researchers from all countries and from all academic fields**. Master's level studies or postdoctoral studies/research are not supported by the programme. The primary target group in the CIMO Fellowship programme are **doctoral level students** who will be doing their doctorate (or double doctorate) **at a Finnish university**.

There are **no annual application deadlines** in the CIMO Fellowship programme. However, please note that applications should be submitted at least 5 months before the intended scholarship period. The **scholarship period may vary from 3 to 12 months** with a monthly allowance of EUR 1,500 to cover living expenses in Finland.

**Applications accepted on a rolling basis**

Further information [here](#)





## 5.2.7 France

### 5.2.7.1 *PALSE outgoing mobility programme*

The **Avenir Lyon Saint-Étienne Programme (PALSE)** supports the **outgoing international mobility of PhD students**.

**Outgoing mobility assistance** is destined for PhD students registered at a Université de Lyon doctoral school who would like to carry out, as part of their doctoral work, a research stay at a research unit located abroad.

PALSE funds **3 to 5 month stays that must take place between January and May 2016**. The calls are **open to PhD students of all nationalities**.

Lyon university has **preferential partnerships** with several universities around the world, among which are the **University of Tokyo and the University of Tohoku**.

**Application deadlines** **usually in early October** (check websites of [each doctoral school](#)).

Further information [here](#)

### 5.2.7.2 *IHÉS Call for Visitor Researchers*

The **Institut des Hautes Études Scientifiques (IHÉS)** encourages **theoretical research** in mathematics, physics and human sciences methodology. It is a reference point for excellence in the international scientific community, with significant achievements in mathematics and theoretical physics.

Each year, **IHÉS welcomes some 200 mathematicians and theoretical physicists from all over the world** at the post-doctoral and senior researcher level.

Researchers can stay at IHES for periods ranging from **a few days to one year** (maximum two in exceptional cases).

IHÉS visitors are given **complete freedom in their research**, allowing them to change fields if they so desire. IHÉS offers invited researchers a per diem, office space in the scientific building and free accommodation in its nearby housing estate.

The **sole criteria for selection is scientific excellence**.

**Deadline: 15 November**

Further information [here](#)

### 5.2.7.3 *Institut Pasteur International PhD positions*

The French research institute for health and disease prevention [Institut Pasteur](#) **enrolls PhD students** within its 120 laboratories.

**Applicants must must hold a master degree in a relevant field** and proven English fluency.

Successful applicants are expected to **start working in October 2016 at the Institut for a 3-year period** during which they will receive a monthly stipend.





This year the call features **49 offers**.

**Deadline: 20 November (host laboratory must be contacted before 6 November)**

Further information [here](#)

## **5.2.8 Germany**

### **5.2.8.1 Humboldt Research Fellowships for Postdoctoral and Experienced Researchers**

The [Humboldt Foundation](#) promotes academic cooperation between excellent scientists and scholars from abroad and Germany. It funds **research fellowships for excellent young and experienced researchers of any nationality and any discipline** to come for long stays in Germany.

The **Fellowships for Postdoctoral Researchers** scheme is for researchers with no more than 4 years of experience after their PhD who wish to carry out a research stay in Germany for a **period of 6 to 24 months**.

The **Fellowships for Experienced Researchers** scheme is for researchers with between 5 and 12 years of experience after their PhD who wish to have a research stay in Germany for a **period of 6 to 18 months**.

Successful applicants must have, outside of an outstanding research record, a good command of English.

**Applications reviewed on a rolling basis**

Further information [here](#) (Postdoctoral) and [here](#) (Experienced Researchers)

### **5.2.8.2 Emmy Noether Programme**

The **Emmy Noether Programme** provides early career foreign researchers (or German researchers working abroad) with the **opportunity to rapidly qualify for a leading position in research** by leading an independent junior research group and assuming relevant teaching duties **in Germany**.

**Early career researchers from all disciplines and nationalities may apply.**

Applicants **must have at least 2 years of postdoctoral experience, but no more than 4 years** of experience after completion of their PhD degree. **Foreign applicants are expected to continue their scientific career in Germany** following completion of the **funding period of 5 or 6 years**.

**Applications reviewed continuously.**

Further information [here](#)



DAAD



### 5.2.8.3 DLR-DAAD Research Fellowships in the fields of Space, Aeronautics, Energy and Transportation Research

DLR – DAAD Research Fellowships is a new programme implemented by the German Aerospace Centre ([DLR](#)) and the German Academic Exchange Service ([DAAD](#)).

This special programme is intended for **highly-qualified foreign doctoral and postdoctoral students, as well as senior scientists**. Proof of English proficiency is necessary, while knowledge of German is a plus.

DLR-DAAD Fellowships are defined and awarded on an individual basis. Each fellowship announcement will indicate the specific qualification requirements and terms of the visit. **There are currently fellowship offers available in Space, Aeronautics, Energy and Transportation**. Application deadline varies according to the call.

List of open calls [here](#)

Further information [here](#)

### 5.2.8.4 Friedrich Wilhelm Bessel Research Awards

**Scientists and scholars, internationally renowned in their field, who completed their doctorates less than 18 years ago** and who in the future are expected to continue producing cutting-edge achievements which will have a seminal influence on their discipline beyond their immediate field of work, are **eligible to be nominated for a Friedrich Wilhelm Bessel Research Award**.

**Direct applications are not accepted**. The award is currently valued at EUR 45,000. Award winners are invited to **spend a period of up to one year cooperating in a long-term research project with specialist colleagues at a research institution in Germany**. The stay may be divided up into blocks.

The Humboldt Foundation grants about 20 Friedrich Wilhelm Bessel Research Awards annually.

Rolling call for applications with two reviews panels per year.

**Next review: Autumn**

Further information [here](#)

### 5.2.8.1 PhD Programmes at the International Max Planck Research Schools

The [Max Planck Institutes](#) and German universities jointly run the **International Max Planck Research Schools (IMPRS)**. There are **60 IMPRS covering all disciplines**: 26 in the Chemistry, Physics and Technology Section, 23 in the Biology and Medicine Section, and 11 in the Human and Social Sciences Section.

The **PhD programmes are open to applicants from any country** holding a Master's degree in a relevant field. Proof of English proficiency is a plus, but is not mandatory.



MAX-PLANCK-GESELLSCHAFT



Deadlines vary from a school to another: September - November

Further information [here](#)

#### 5.2.8.2 DFG-JSPS German-Japanese Graduate Externship Programme



This German Research Foundation (DFG) and JSPS joint programme plans for **symmetrical exchanges of PhD students** (at least 6 per year for a maximum of 10 months abroad each) and plans to **dispatch postdoctoral or junior researchers** (at least 5 per year) between research units in Germany and in Japan over a five-year period starting in April 2016. **All fields of study are concerned.**

Funding on the German side is ensured by the DFG. Funding of two proposals will be ensured by the JSPS on the Japanese side for approximately EUR 110,000 per year.

Proposals must be submitted by the two teams involved, directly to DFG and JSPS.

**Application period: 26 October to 30 October**

Further information [here](#) (Japanese only)

#### 5.2.9 Ireland

##### 5.2.9.1 President of Ireland Young Researcher Award



The **President of Ireland Young Researcher Award** is Science Foundation Ireland's (SFI) most prestigious award to **recruit and retain early career researchers to carry out their research in Ireland.**

The award recognises outstanding engineers and scientists of any nationality who, early in their careers, have already demonstrated exceptional potential for leadership at the frontiers of knowledge. Awardees will be selected on the basis of exceptional accomplishments in science and engineering in all areas covered by SFI's legal remit in order to **perform their research project in Ireland.**

Applicants should have received their last degree less than eight years ago and have completed at least 36 months of postdoctoral research activity. **All applications must be submitted by an eligible Irish Research Body.**

**Research projects may last up to five years and receive up to EUR 1 million in total.**

**Applications accepted on a rolling basis.**

Further information [here](#)

##### 5.2.9.2 SFI's Research Professorship Programme

The purpose of the **Research Professorship Programme** is to **recruit global research talent to Ireland** to build the national research base. The ambitions of the appointed SFI Research Professor will be **consistent with the strategic plans of the host research body.**



**Submission of proposals will be by invitation only** following an expression of interest phase during which SFI will work closely with the research body. **Funding of up to EUR 5 million** (does not cover the professor's salary) will be provided to each successful applicant for a **five-year programme** of work.

**Applications accepted on a rolling basis.**

Further information [here](#)

### **5.2.9.3 SFI Industry Fellowship Programme 2015**

The purpose of the **Science Foundation Ireland (SFI) Industry Fellowship Programme** is to **facilitate exchanges between academia and industry worldwide.**

Fellowships can **last from 1 to 12 months** if full time or up to 24 months if part time. The maximum Industry Fellowship award amount is EUR 120,000 direct costs.

Fellowships can be awarded to **Irish academic researchers wishing to spend time in industry worldwide** and to **individuals from industry anywhere in the world wishing to spend time in an eligible Irish Research Body.**

Two deadlines per year.

**Next deadline: 3 December**

Further information [here](#)

## **5.2.10 Luxembourg**

### **5.2.10.1 PEARL Funding Programme**

With the **PEARL funding programme**, the Fonds National pour la Recherche ([FNR](#)) offers **Luxembourg institutions** an opportunity to **attract established and internationally recognised researchers from abroad** in strategically important areas, to accelerate the development and strengthening of Luxembourg's **national research priorities.**

PEARL projects have a **lifespan of five years** with a **financial contribution** of between **EUR 3-4 million** by the FNR. The financial contribution can be used flexibly to implement the research programme at the host institution.

**Deadline: 15 October**

Further information [here](#)

### **5.2.10.2 ATTRACT 2015 Call for Proposals**

The **ATTRACT programme** is funded by Luxembourg's **National Research Fund ([FNR](#))**. It aims to support Luxembourgish research institutions to expand their competences in strategic research areas by attracting outstanding young researchers.





The programme is designed for **foreign researchers not yet established in Luxembourg**. It offers them the opportunity to **set up an independent research team within a public-sector research institution**.

Research **proposals should be submitted jointly by the candidate and the host institution**. Applicants must have **2 to 8 years of research experience after completion of their PhD**.

Selected projects may have a **lifespan of five years** and receive up to EUR 1.5 million or EUR 2.0 million for the “Starting Investigators” or “Consolidating Investigators” respectively.

**Deadline: 15 January 2016**

Further information [here](#)

## 5.2.11 Netherlands

### 5.2.11.1 NWO Visitor's Travel Grant

The aim of this grant, provided by the **Netherlands Organisation for Scientific Research (NWO)**, is to facilitate cooperation between Dutch and foreign researchers.

**Researchers with a tenured position at one of the Dutch universities, KNAW institutes, NWO institutes, NKI, MPI Nijmegen, researchers from the Dubble Beamline at the ESRF in Grenoble, NCB Naturalis, and the Advanced Research Centre for NanoLithography (ARCNL) can apply for a visitor's grant.** With this grant, highly qualified **senior researchers from abroad who hold a PhD can stay in the Netherlands for a maximum of four months**.

**Applications reviewed continuously**

Further information [here](#)

### 5.2.11.2 NWO Innovational Research Incentives Scheme Vidi

The NWO **Vidi scheme** gives researchers who have already spent several years doing postdoctoral research the opportunity to **develop their own innovative lines of research, and to appoint one or more researchers**.

Applications can be submitted by **candidates who have obtained their PhD between 3 and 8 years ago**, irrespective of whether they hold tenured positions and of whether they come **from the Netherlands or abroad**. The **research must be conducted at an approved Dutch host institution**.

The maximum amount of a Vidi grant is **EUR 800,000 for a period of five years**.

**Deadline: 1 October**

Further information [here](#)







### 5.2.11.3 KNAW Visiting Professors Programme

The Royal Netherlands Academy of Arts and Sciences ([KNAW](#)) funds its **Visiting Professors Programme** in order to enable **outstanding foreign researchers from any discipline to spend time working in the Netherlands.**

The programme **covers a research budget** and the Visiting Professor's travel and accommodation expenses for a **maximum period of one year.** The **applicant must find a Dutch university to act as his/her host organisation.**

**Deadline: 2 November**

Further information [here](#)

### 5.2.12 Norway

#### 5.2.12.1 RCN's Personal Visiting Researcher Grant

The **Research Council of Norway** ([RCN](#)) funds this grant, the objective of which is to help strengthen Norwegian research groups by **offering visiting foreign researchers (postdoctorate level or higher) the opportunity to perform research in Norway.** The grant may cover stays for visiting researchers **from one to 12 months.** The **applicant must be from a Norwegian research institution.**

**Rolling application call with several reviews per year.**

Further information [here](#)

### 5.2.13 Poland

#### 5.2.13.1 IDEAS For Poland

The objective of this programme is to **encourage young, brilliant researchers from around the world to choose Poland as the place to carry out research projects successfully funded by the ERC Starting Grant scheme.** The programme is designed for people whose previous scientific record demonstrates that they are highly independent as researchers, and warrants that they will conduct world-class quality research.

Subsidies can be granted directly after winning an ERC grant and during the project. The maximum subsidised period is 3 years.

**Applications accepted on a rolling basis**

Further information [here](#)

#### 5.2.13.2 POLONEZ postdoctoral fellowships

**POLONEZ** is a National Science Centre ([NCN](#)) funding programme addressed to **incoming researchers of any nationality and discipline** interested in doing research at Polish research institutions.

Candidates with a **PhD degree or at least four years of full-time equivalent research experience** may apply.



The Research Council  
of Norway





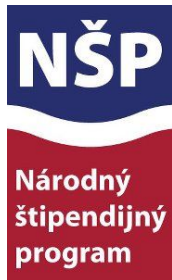
Fellowships will fund stays of **12 to 24 months** in Poland, including researcher salary, mobility allowance and part of the research costs.

**Deadline: 15 December**

Further information [here](#)

## 5.2.14 Slovakia

### 5.2.14.1 National Scholarship Programme (Incoming and Outgoing)



The **National Scholarship Programme** of the Slovak Republic ([NSP](#)) supports study/research/teaching/artistic **mobility of foreign students, PhD students, university teachers, researchers and artists toward higher education institutions and research organisations in Slovakia.**

The scholarship shall cover scholarship holders' living costs during their **1 to 12 months stay in Slovakia** with an allowance of up to EUR 1,000 per month.

**NSP also supports outgoing mobility of students and PhD students** studying at Slovak higher education institutions to selected countries (including Japan).

Two calls per year.

**Next deadline: 31 October**

Further information [here](#) (incoming and outgoing), [here](#) (incoming PhD students) and [here](#) (incoming university teachers, researchers, artists)



## 5.2.15 Sweden

### 5.2.15.1 STINT Initiation Grants

The **Swedish Foundation for International Cooperation in Research and Higher Education** ([STINT](#)) offers **Initiation Grants** for the **implementation of short-term projects** targeting the **building of new and strategically interesting international relationships.**

**Candidates shall be active at a university in Sweden** and have defended their doctorates. The **principal collaborating party shall be outside the EU/EFTA area.** The proposed activities within the project shall be completed within **twelve months from closing date of the call** and the applied amount shall not exceed SEK 150,000 (EUR 15,750).

**Applications accepted on a rolling basis.**

Further information [here](#)

### 5.2.15.2 STINT Postdoctoral Transition Grants

The aim of the Postdoctoral Transition Grants for Internationalisation programme is to **support promising young researchers in Sweden after a postdoc period which included at least one year abroad.**



Projects may last for up to three years. The funds are to be used for mobility, stays abroad or foreign researcher's stays in Sweden. **Applicants should be employed by and active at a university in Sweden and have obtained their PhD.**

**Deadline: 1 October**

Further information [here](#)



### **5.2.15.3 Formas Funding for international Workshops**

The **Swedish Research Council** [Formas](#) award **grants towards the costs of organising conferences and workshops** within the areas of responsibility of Formas.

Meetings organised in Sweden are prioritised. The grant may be used to cover travel and accommodation costs for a limited number of participants, primarily participants from other countries. Funding from Formas may also be used to support organisational costs.

A **doctoral degree is not required** in order to apply for funding to organise workshops.

Applications continuously received; 3 reviews per year.

**Next Deadline: 1 October**

Further information [here](#)

## **5.2.1 Switzerland**

### **5.2.1.1 SNSF International Exploratory Workshops**

The **Swiss National Science Foundation** ([SNSF](#)) **International Exploratory Workshops** are aimed at **researchers in Switzerland who wish to organise workshops with participants from abroad**. The workshops are an opportunity for researchers from different backgrounds to meet, share new insights and increase their knowledge in a field.

The grant comprises **travel, room and board costs for up to ten participants from abroad**. The workshops may last **from two to five days**.

Applicants must be affiliated with a Swiss university or research institute and hold a PhD degree.

Several calls per year.

**Next deadline: 7 October**

Further information [here](#)

### **5.2.1.2 SNSF International Short Visits**

This scheme is aimed **at researchers in Switzerland who wish to go abroad for a short period** or **researchers abroad who wish to collaborate with researchers in Switzerland**. During the visit, they pursue a small joint research project.





Short visits may last from **one week to three months**. There are **no geographical and topical restrictions**. The grants include travel, room and board expenses.

Both host and guest researchers must contribute to the application documents but submission must be performed by the researcher affiliated with Switzerland.

#### **Applications continuously reviewed**

Further information [here](#)

## **5.2.2 Turkey**

### **5.2.2.1 TÜBİTAK Fellowships for Visiting Scientists**

The **Scientific and Technological Research Council of Turkey** ([TÜBİTAK](#)) grants fellowships for **international scientists/researchers who would like to give workshops/conferences/lectures, or conduct R&D activities in Turkey**.

Three types of visits are granted within this programme: **Short-term (up to 1 month), Long-term (up to 12 months) and Sabbatical Leave (from 3 months to 12 months)**. All types of grants cover monthly stipend and travel costs.

#### **Applications accepted on a rolling basis**

Further information [here](#)

### **5.2.2.2 Research Fellowship Programme for International Researchers**

The **Scientific and Technological Research Council of Turkey** ([TÜBİTAK](#)) grants **fellowships for highly qualified PhD students and young post-doctoral researchers of any nationality (except Turkish) and discipline to pursue their research in Turkey**.

The fellowships cover **monthly stipend and travel expenses** for a maximum **duration of 12 months**.

Two application rounds per year.

**Next deadline: 19 October**

Further information [here](#)

## **5.2.3 United Kingdom**

### **5.2.3.1 BBSRC David Phillips Fellowships**

These **Biotechnology and Biological Sciences Research Council** ([BBSRC](#)) fellowships are **for scientists who have demonstrated high potential and who wish to establish themselves as independent researchers**.

Applicants, of **any nationality**, should have **no less than 3 years of postdoctoral research experience**. They **must be resident in the UK at the**





**time of application or in the process of moving to the UK** to take up an already agreed contract at an eligible organisation such as Higher Education Institutions (HEIs) or Research Council Institutes (RCIs).

Proposals in any area of Biosciences are welcome but proposals that are aligned with BBSRC's overarching strategic priorities are particularly encouraged (i.e. plants, microbes, animals and tools for biological research).

**Awards are for 5 years**, up to 5 are available each year. They include personal salary and a significant research support grant (up to GBP 1 million - EUR 1.4 million).

**Deadline: 21 October**

Further information [here](#)

#### **5.2.3.2 BBSRC Japan Partnering Awards**

These awards aim at **supporting the set up of partnership links between UK and Japanese laboratories**, at promoting the exchange of researchers (particularly in their early career) and at promoting access to facilities.

Typically they amount to **GBP 50,000** (EUR 62,500) which may be **used over a 4-year period** for travel, subsistence and workshops or exchange activities. Further funding may be obtained either through JST or JSPS for the Japanese counterparts of the partnerships.

**Deadline: 12 November**

Further information [here](#)

#### **5.2.3.3 Royal Society's International Exchanges Scheme**

The [Royal Society's](#) **International Exchanges Scheme** is designed for **collaborative projects between British and overseas researchers in the field of science**.

This scheme is for **scientists in the UK who want to stimulate new collaborations** with leading scientists overseas through either a one-off visit or bilateral travel.

Eligible projects should include two teams or individuals: one based in the UK and the other based overseas.

Funding of up to GBP 6,000 (EUR 7,500) per year for two years is provided to cover travel, subsistence and research expenses over one or multiple trips. **Approximately 3 projects receive funding** each year.

**Deadline: 12 October**

Further information [here](#)

#### **5.2.3.4 Chevening Scholarships in Japan**

The **Chevening Scholarships** are the UK government's global scholarship programme. They **provide funding for a one-year master's degree in any subject and at a UK university**.





Apply to a partnership may grant Japanese students the right to pick one of the UK universities participating in the programme. Scholarships and partnerships cover tuition fees, travel expenses and provide a monthly stipend.

Applicants must have a relevant undergraduate degree and should meet the Chevening's [language requirements](#) for English proficiency.

**Deadline: 3 November**

Further information [here](#)

#### **5.2.3.5 Sasakawa Foundation Butterfield Awards call for proposal**



The [Sasakawa Foundation Butterfield Awards](#) are intended to **encourage and facilitate exploratory exchanges and collaborations between Japan and the UK** in any of the scientific, clinical, social and economic aspects of **medicine and health**.

Preference will be given to **proposals involving new collaborations**, and **applications from early stage researchers** are particularly welcomed.

A few awards of a maximum amount of GBP 5,000 (EUR 6,250) are offered annually.

**Deadline: 15 December**

Further information [here](#)

#### **5.2.3.6 Gates Cambridge Scholarships**

The **Gates Cambridge Scholarships** are **highly competitive, full-cost scholarships**. They are awarded to outstanding **applicants from countries outside the UK** to pursue a **full-time postgraduate degree in any subject** available at the University of Cambridge.

Candidates can apply for a **one-year post-graduate course, a full 2-year master course or a 3-year PhD course**.

55 Scholarships are awarded each year.

**Deadline: 2 December**

Further information [here](#)

## **5.3 Japan**

### **5.3.1 JSPS Fellowships Programmes for Research in Japan**

The **Japanese Society for the Promotion of Science (JSPS)** carries out programmes which **provide overseas researchers** who have an excellent record of research achievements with an opportunity to **conduct postdoctoral studies, collaborative research, and short research stays** in Japan.







**Researchers from all countries** with diplomatic relations with Japan and of **any field of study are eligible.**

**Applications must be submitted by the inviting researchers** who wish to host foreign researchers in Japan, **either directly through JSPS** (see [here](#)) **or through an overseas nominating authority** (France, Germany, Hungary, Italy, the Netherlands, Norway and Sweden: see list [here](#)). Various fellowship categories are provided:

- **Standard postdoctoral fellowships** are of a duration of **1 to 2 years.**
- **Short-term postdoctoral fellowships** are of a duration of **1 to 12 months.**
- **Pathway postdoctoral fellowships** are for **1-2 years** and should be **followed by a sustainable implantation** of the researcher in Japan.
- **Invitation fellowships** are for **research stays** of a duration of **2-10 months (Long-term), 14-60 days (Short-term), 7-30 days (Short-term S).**

Approximately **320 postdoctoral fellowships** and **290 invitation fellowships** should be awarded for JFY2016 through two to four calls.

**Next application rounds:**

- Postdoctoral fellowships: **26 April - 6 May 2016 (Standard)**  
**5-9 October (Short-term)**
- Invitation fellowships: **26 April - 6 May 2016**  
**(Short-term and Short-term S)**

Further information [here](#) (pdf)

### **5.3.2 JSPS New Core to Core Programme**

**Since 2012, the JSPS has implemented a newly-revised Core-to-Core Programme**, comprised of two components: (1) **Advanced Research Networks** and (2) **Asia-Africa Science Platforms**. This programme is designed to **create top, world-class research centres in Japan that partner with other core research institutions around the world over the long-term.**

The Advanced Research Networks component of the Core-to-Core Programme **supports bi- or multi-lateral cooperation in cutting-edge fields of science.**

This programme **may fund cooperative projects in any field**, provided they are **“scientifically cutting-edge**, and strategic from an international point of view”.

**Accepted projects may start as soon as April 2016** and may **last a maximum of five years** during which they may receive an annual stipend of JPY 18 million (EUR 133,000) from JSPS which must be balanced with allowance from the other foreign institutions participating in the project.



Approximately 8 projects should be accepted under this programme for this round.

**Researchers of any nationality, based in Japan, may draft proposals; but applications must be submitted through and by a Japanese research institution.**

**Application round: 4 September to 6 October**

Further information [here](#) (English translation) and [here](#) (Japanese official version and application forms)

### 5.3.3 JSPS Grants-in-Aid for Scientific Research “Kakenhi”

“Kakenhi” Grants-in-Aid are awarded to promote creative and pioneering research across a wide spectrum of scientific fields, ranging from the humanities and social sciences to the natural sciences.

**Grants are awarded to projects organised by individual researchers, research groups at Japanese universities or research institutes engaged in basic research, particularly research in critical fields attuned to advanced research trends.**

These grants are **divided into several categories with different intents which fund projects for periods between 1 and 6 years** with yearly allowances between JPY 1 million and JPY 500 million (EUR 7,000 to 3.7 million) depending on the scale, the level of scientific advancement and the international counterpart of each project. More information on the different types of grants can be found [here](#).

Foreign researchers with an employment contract running at a Japanese research institution can apply.

**Deadline: 9 November (PI), 6 October (Institution)**

Further information [here](#) (English translation) and [here](#) (Japanese original and application documents)

### 5.3.4 Nichibunken Visiting Research Scholars in Japanese Studies

The **International Research Centre for Japanese Studies (IRCJS, Nichibunken)**, promotes **interdisciplinary research on Japanese culture** and fosters **cooperation among researchers in Japanese studies** worldwide. The centre regularly appoints a number of scholars from around the world as **Visiting Research Scholars**.

Researchers of **any nationality** can apply for **a stay of 3 to 12 months at the centre**, during which salary, travel expenses and research allowance may be covered by the centre.

Several openings each year.





**Deadline: 31 october**

Further information [here](#)

### 5.3.5 NICT's invitations to foreign researchers



In order to support research in the area of telecommunications, the **National Institute of Information and Communications Technology (NICT)** proposes each year a small number of grants covering travel and stay expenses for foreign researchers to come to Japan for short trips, courses or workshops.

Any Japanese institution performing research and/or activities in telecommunications can apply. Subjects of invitation can be researchers of any level (even PhD students), the sole criteria for selection being excellence.

**Deadline: 2 November**

Further information [here](#) (Japanese only)

### 5.3.6 SHIONOGI Science Programme 2015 Call for Proposals

Shionogi & Co., Ltd. is funding this programme as part of an effort to **identify research seeds** and to develop them into consumer products.

**Target countries** are Australia, **Belgium**, **Denmark**, **France**, **Germany**, **Ireland**, **Luxembourg**, New Zealand, the **Netherlands**, the **UK** and **Japan**.

Teams from one or several of these countries may submit research proposals which must fit with the company's priorities: **research for novel target molecules**, novel **biomarkers** or **technologies** for drug discovery or production.

The selection criteria include originality of research; rationality; future potential; the possibility of commercialization and match with the needs of the company.

Research projects **may last up to 5 years** and **annually receive JPY 5 million to JPY 15 million** (EUR 37,000 to EUR 110,000).

**Deadline: 30 October**

Further information [here](#)



## 6 Jobs

### 6.1 EURAXESS Jobs

There are currently **5317 jobs and fellowships** advertised on the **EURAXESS Jobs webpage**. They can be viewed by country, level of seniority, field of research or via free text searches. Please note that these jobs also include doctoral fellowships.

All the positions can be viewed at the [EURAXESS Jobs page](#).

You can also **advertise for jobs and fellowships at your organisation, free of charge**, on the [EURAXESS Links Japan website!](#)

Research organisations (public and private) can upload their job vacancies located in Japan.

Researchers can post their CVs for free [here](#). Do not hesitate to do it and increase your visibility.

### 6.2 Jobs in Europe (selection)

#### 6.2.1 Lecturer position at University of Tartu, Estonia

The **University of Tartu** is Estonia's leading centre of research and training. It spearheads the country's reputation in research and provision of higher education. As Estonia's national university, UT stresses the **importance of international co-operation and partnerships** with reputable research universities all over the world.

The primary tasks of the **lecturer** involves **conducting research, delivering lectures and conducting seminars at the bachelor and master levels in the field of basic and advanced microeconomics** and related topics in English.

Candidates should have a PhD degree or equivalent experience in research plus 4-10 years of experience in a relevant field.

**Application deadline: 1 October**

Further information: [EURAXESS Jobs](#)



### 6.2.2 ERC Postdoctoral position at Ludwig Boltzmann Institute for Cancer Research, Austria

The **ERC-funded group** of Florian Grebien is looking for a **motivated and experienced postdoctoral researcher** to work on **functional studies on the transforming mechanisms of AML-inducing mutations**.

The laboratory is embedded in the existing infrastructure of the Ludwig Boltzmann Institute for Cancer Research, located in the city center of Vienna.

Candidates should **hold a PhD degree and have an outstanding track record in cancer research**, cellular and molecular biology, genetics or immunology, as documented by relevant publications in the field.

**Application deadline: 31 October**

Further information: [EURAXESS Jobs](#)

### 6.2.3 MSCA PhD positions, Tampere University of Technology, Finland



**Two PhD positions are available at the Tampere University of Technology, Finland** within the MSCA project [BigDataFinance](#) ("Training for Big Data in Financial Research and Risk Management"). This project provides doctoral training in sophisticated data-driven risk management and research at the crossroads of Finance and Big Data.

Candidates of **any nationality, holding a MSc degree** in a relevant field and with no more than 4 years of full-time research experience may apply.

The successful candidate will be employed full time on a **3 year contract**.

**Application deadline: 5 October**

Further information: [EURAXESS Jobs](#)

### 6.2.4 Other jobs in Europe

Find a wealth of career links on our [EURAXESS Links Japan web portal!](#)

JOBS SERVICES RIGHTS

ASEAN Brazil China India Japan North America

EURAXESS Japan | Useful links

**Useful links**

Some links to useful sources of general information and careers information are provided below.



## 6.3 Jobs in Japan

### 6.3.1 JREC-IN

The **Japanese job portal for researchers JREC-IN** is currently advertising **2,791 positions in Japanese**, and **326 positions in English**.

All positions can be viewed at the JREC-IN portal in [English](#) or in [Japanese](#).

### 6.3.2 Faculty and postdoctoral positions at WPI I2CNER (Kyushu University)

The **International Institute for Carbon-Neutral Energy Research (I2CNER)** is one of the World Premier International Research Center Initiative (WPI) Institutes.

I2CNER is **seeking faculty and post-doctoral research associates** with experience in **energy system analysis in Japan or globally**, knowledge of data on current use, costs, and emissions of energy systems and infrastructure, and any significant energy system models including projections for the future.

**Application deadline: 30 October**

Further information [here](#)

### 6.3.3 Postdoctoral position at WPI MANA (NIMS)

The [International Center for Materials Nanoarchitectonics \(MANA\)](#), Reticular Materials Unit/Group, is looking for **one postdoctoral researcher** with a strong background in catalyst design and organic synthesis.

The successful applicant will be contracted for a **duration of one year**, with a possible 6 month extension.

**Applications welcome until position is filled**

Further information [here](#)

### 6.3.4 Still open positions (see previous newsletters)

- Postdoctoral positions at WPI AIMR (Tohoku University)

Further information [here](#)

- Postdoctoral positions at WPI ItbM (Nagoya University)

Further information [here](#)

- Postdoctoral positions at WPI iCeMS (Kyoto University)

Further information [here](#) and [here](#)

- Faculty position at WPI IPMU (University of Tokyo)

Further information [here](#)





### 6.3.5 Other jobs in Japan

Find a number of career links on our [EURAXESS Links Japan web portal!](#)

JOBS SERVICES RIGHTS LINKS

< ASEAN Brazil China India Japan North America

EURAXESS Japan | Useful links

## Useful links

Some links to useful sources of general information and careers information are provided below.



## 7 Events

### 7.1 Events in Europe

Non-exhaustive list of scientific or research-related events in Europe.

Event	Date	Location	Organised by	Field	Link
ICT 2015 Innovate, Connect, Transform	20-22 Oct.	Lisbon, Portugal	European Commission / Fundação para a Ciência e a Tecnologia	ICTs	<a href="#">here</a>
Responsible Research & Innovation	2-3 Nov	Porto, Portugal	BIN@	R&I	<a href="#">here</a>
European Space Launchers	3-4 Nov.	Paris, France	Air and Space Academy	Space	<a href="#">here</a>
France - Japan Joint Forum "Science of Fermentation"	3-4 Nov.	Dijon, France	JSPS / Université de Bourgogne-Franche-Comté	Biochemistry	<a href="#">here</a>
Info Day on Horizon 2020 Work program 2016-2017 "Smart, green and integrated transport"	5 Nov.	Brussels, Belgium	European commission	H2020	<a href="#">here</a>
Info Day on Horizon 2020 Work programme 2016-2017 'Secure, Clean and Efficient Energy'	6 Nov	Brussels, Belgium	European commission	H2020	<a href="#">here</a>
7th European Innovation Summit	7-10 Dec	Brussels, Belgium	Knowledge4Innovation	Innovation	<a href="#">here</a>

### 7.2 Events in Japan

#### 7.2.1 Horizon 2020 Info Day 2015: Horizon 2020 Work Programme for 2016-17 and EU-Japan Cooperation



This event, organised by the [JEUPISTE](#) project and NCP Japan, will highlight the opportunities for Japanese participation in Horizon 2020 by presenting the new Work Programmes in light of cooperation with Japan, featuring examples of Japanese participation and giving an overview of support services in Japan.

Horizon 2020 is the biggest EU Research and Innovation programme ever with nearly EUR 80 billion of funding available over seven years (2014-2020) and open to participation from all over the world, including Japan. Every two years, Work Programmes in various fields are published that contain detailed call information for the next two years. In October 2015, the Work Programmes for 2016-2017 will be published.

**Date: 14 October**



Venue: Delegation of the European Union to Japan

Language: English and Japanese with simultaneous translation

Registration [here](#) until 7 October

Further information [here](#)

### 7.2.2 French Research Day 2015 - JFR 2015 | Call for communications



[Sciencescope](#), with the support of institutional partners including the Maison Franco-Japonaise de Tokyo (MFJ), the Embassy of France in Japan, Centre National de la Recherche Scientifique (CNRS), the Chamber of commerce and Industry (CCIFJ), as well as Alumni associations as ABSCIF and ABC, is organising the **French Research Day (JFR)** in Japan.

JFR'15 is gathering French-speaking researchers and students in Japan **from all disciplines and citizenships** in order to enforce discussions among this research community.

The main language of the event is French, but English presentations are possible for non-native French speakers.

Attendance is free and open to all, but registration is mandatory for planning purposes. Registration includes the JFR booklet, lunch and evening cocktail at MFJ.

You can now register online and **submit your contribution up until October 19th 2015**.

**Date: 13 November**

Venue: Tokyo, [MFJ](#)

Registration and further information [here](#)

### 7.2.3 Programme for Leading Graduate Schools Forum 2015

The **Programme for Leading Graduate Schools**, includes 62 programmes, at some 30 participating universities, with active collaboration between industry, academia and government in order to develop human resources equipped with creativity and a holistic view across multiple disciplines.

This Forum disseminates the progress of this educational initiative and showcases the diversity of understanding the students have been able to attain; and to further enhance the Programme by sharing the implementation status and challenges of each programme to a broader constituency.

**Date: 24-25 October**

Venue: [Bellesalle Shinjuku](#)

Further information and registration [here](#)



Please feel free to contact us at [japan@euraxess.net](mailto:japan@euraxess.net) if you want your event to be on the list!

### 7.2.4 Other events in Japan

Non-exhaustive list of scientific or research-related events in Japan.

Event	Date	Location	Organised by	Field	Link
<b>The Role of Renewable Energy for a Sustainable Energy Supply</b>	6 Oct	Tokyo	German JSPS Alumni Association	Energy	<a href="#">here</a>
<b>International Joint Symposium on Structural Biological Dynamics</b>	5-6 Nov	Tokyo	JST (CREST - PRESTO)	Biology	<a href="#">here</a>
<b>Science Agora 2015</b>	13-15 Nov	Tokyo	JST	STI	<a href="#">here</a>



#####

**About EURAXESS Links Japan**

EURAXESS Links Japan is a networking tool for European researchers active/seeking activity in Japan and for Japanese researchers wishing to collaborate with and/or pursue a career in Europe.

EURAXESS Links Japan provides information about research in Europe, European research policy, opportunities for research funding, for EU-Japan and international collaboration and for trans-national mobility.

**Membership is free.**

Visit us at [japan.euraxess.org](http://japan.euraxess.org) and click on the Join the EURAXESS Links Japan community hyperlink on the right-hand side of the page.

EURAXESS Links networks have thus far been launched in North America (USA & Canada) Japan, China, India, the ASEAN hub (encompassing Singapore, Thailand, Malaysia, Indonesia and Vietnam) and Brazil.